



OUR MISSION

To enhance the future of the IAEG through improved gender equity in engineering geology and increasing involvement and inclusion of women in the activities and opportunities of the Association

Our Vision

- An organization and industry in which women are “counted in”
- Improved visibility and recognition of female leaders in engineering geology with increased representation in key roles and in all the activities of the IAEG

“Count her in”

Ann Williams

Technical Fellow
BECA

Ann is a Beca Technical Fellow in the fields of engineering geology and hydrogeology, a geotechnical and infrastructure people and business manager, a Board member, a collaborator and a colleague; an advocate for our profession for more than 30 years

Ann is passionate about continuous learning, growing great people to have amazing careers, fresh collaborative thinking to problem solve, bringing diverse people and skills together.



INTERNATIONAL ASSOCIATION FOR
ENGINEERING GEOLOGY
AND THE **ENVIRONMENT**
ASSOCIATION INTERNATIONALE DE
GÉOLOGIE DE L'INGÉNIEUR
ET DE L'ENVIRONNEMENT

Helen Reeves (UK & IAEG VP Europe)

**Director & Head of Discipline for
Geoscience & Engineering Geology (Europe)
Jacobs**

Engineering geologist over 20 years' experience: leading multi-disciplinary ground engineering project teams, engineering geological mapping, rock mass characterisation, geohazard mapping & geomechanics; an advocate for our profession through the IAEG and UK National Group (mentoring and guiding early career colleagues).

Helen is passionate about championing our profession and demonstrating through various forms of communication the value that we contribute to society.





Jean Hutchinson

Professor of Geological Engineering
Queens University

Jean's research and consulting work over the past 40 years has focused on various aspects of ground support as well as instrumentation and monitoring, under the umbrella of risk-based assessment. She teaches field courses exploring the opportunities to integrate closure planning, reuse of waste and progressive decommissioning within the mining cycle.

Jean is passionate about promoting inclusivity, helping students and early career professionals to thrive both technically and emotionally in often challenging work environments.



INTERNATIONAL ASSOCIATION FOR
ENGINEERING GEOLOGY
AND THE **ENVIRONMENT**
ASSOCIATION INTERNATIONALE DE
GÉOLOGIE DE L'INGÉNIEUR
ET DE L'ENVIRONNEMENT

Felicia Weir

Principal and Director
PSM

Felicia is a Director and Principal Engineering Geologist who specializes in geotechnical open pit slope design and operational support. Her recent work has focused on rock fall risk, discrete fracture networks and management of unstable slopes.

Felicia is passionate about earth sciences education. She is also a strong advocate for both the support and promotion of women in STEM, particularly in the field of open pit mining



Atiye TUĞRUL (Türkiye)

Professor of Engineering Geology
İstanbul University-Cerrahpasa

Atiye's research and consulting work over the past 35 years have focused on construction materials, especially aggregates and dimension stone.

She was the first woman Vice President of IAEG, responsible for Europe (2010-2014). She is also the Chairperson of the IAEG Aggregate Commission and the first woman to win the Richard Wolters Prize.

Atiye is passionate about lifelong learning, mentoring students and early career professionals, fostering collaboration among those working specifically in construction materials, and developing innovative projects.



Danny Love Wamba Djukem (Cameroon)

Postdoctorate at the State key laboratory of Geohazards
Prevention and Geoenvironment Protection, Chengdu
University of Technology, China

Danny defended her PhD/thesis on March 2022, in the field of Geotechnics and Geohazards.

Her research interest is to establish practical guidance to improve management of landslide hazards due to purely natural causes and those enhanced by anthropogenic factors (urbanization, deforestation), in order to reduce related risks involving multiple impacts (casualties, damage to buildings).

-Ph.D topic: Reducing landslide risk using a multifactorial approach: case-study of the western flank of Mount Oku (Cameroon volcanic line).

-Postdoctorate project: An alert on the relationship between repeated earthquakes, meteorological forces and associated co-seismic landslide mechanisms: case studies of China (Lushan, Luding and Taiwan), and Haiti



INTERNATIONAL ASSOCIATION FOR
ENGINEERING GEOLOGY
AND THE **ENVIRONMENT**
ASSOCIATION INTERNATIONALE DE
GÉOLOGIE DE L'INGÉNIEUR
ET DE L'ENVIRONNEMENT



Sally Roberts-Kelly (Australia)

Associate
EDG Consulting

Sally leads the management, design, analysis and construction of civil geotechnical projects. Her favourite areas of interest include the development of EGMs, slope risk assessment and remedial design in both soil and rock, as well as Eng Geol/ rock mechanics/ geotech mapping in all environments.

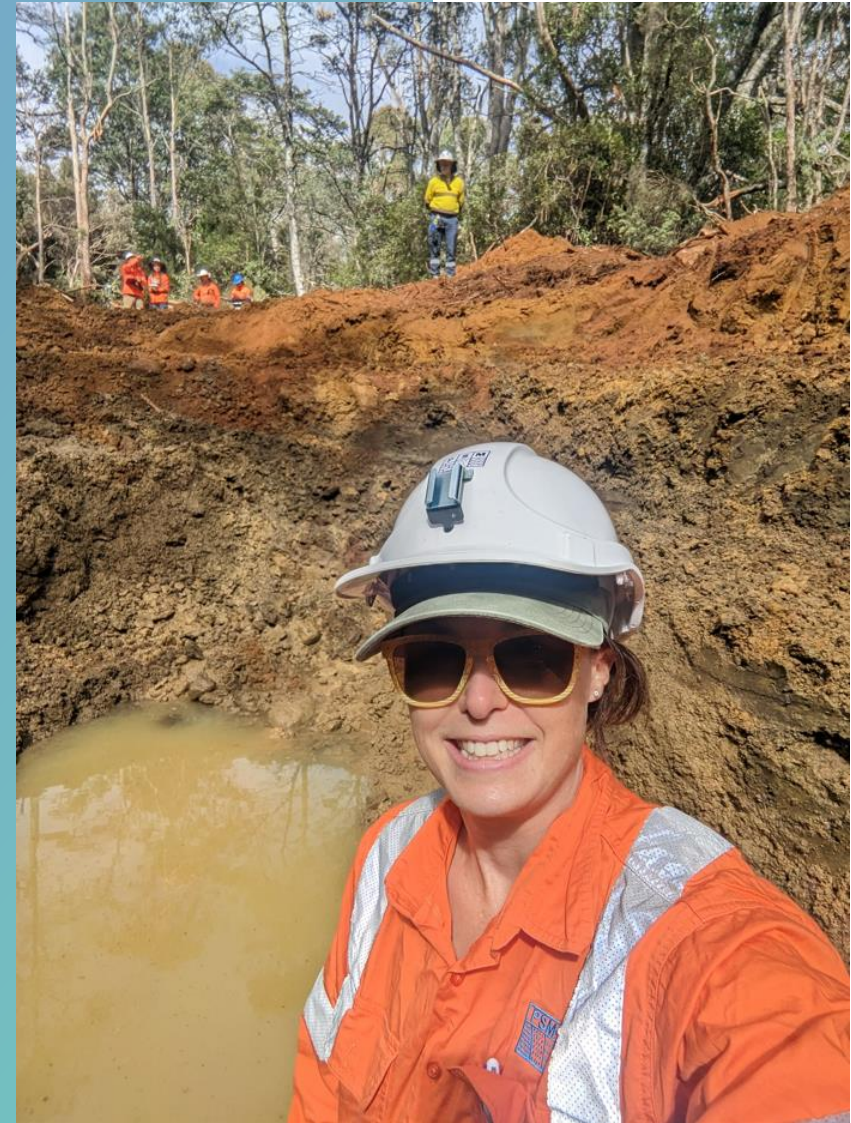
Sally enjoys engaging with like minded people, while undertaking interesting and challenging work in a productive atmosphere.

Megan Packer (Australia)

Principal
PSM

Megan is a Principal Engineering Geologist who specializes in geotechnical ground models, investigations and geomorphology for large-scale civil infrastructure projects. Her recent work has focused on development of the design ground model for a pumped hydro scheme including tunnels, large-diameter deep shafts, embankments, earthworks, slope stability and excavations – everything civil related!

Megan is passionate about promotion of engineering geology within the broader industry and to younger members of the science community.





Fanny Descamps (Belgium)

Associate Professor in Geomechanics
University of Mons

Fanny's research is focused on the constitutive modelling of geomaterials and its connection to geology, with applications in stability of underground works, slopes and post mining issues. She broadens her interests to mining engineering at large, particularly in terms of planning. She teaches geomechanics and reservoir engineering.

Fanny is passionate about preparing students to their future work and tomorrow's challenges and bringing younger people's interest to engineering geology and mining.



INTERNATIONAL ASSOCIATION FOR
ENGINEERING GEOLOGY
AND THE **ENVIRONMENT**

ASSOCIATION INTERNATIONALE DE
GÉOLOGIE DE L'INGÉNIEUR
ET DE L'ENVIRONNEMENT

Pabitra Bhandari (Nepal)

Engineering geologist at NS Engineering and Geotechnical Private Ltd.



Pabitra Bhandari's expertise in engineering geology has been cultivated through an MSc from Tribhuvan University and three years of practical experience in geology and geotechnical engineering. Pabitra possesses strong problem-solving skills in the field of engineering geology, along with a robust understanding of various rock and soil tests, rock and mineral identification, geological and engineering geological mapping, and geophysical testing methods such as Electrical Resistivity Tomography (ERT), Seismic Refraction Tomography (SRT), and Multichannel Analysis of Surface Waves (MASW).

Currently, Pabitra is applying her skills as an Engineering Geologist at NS Engineering and Geotechnical Private Ltd. She has a deep interest in rock mechanics, as well as logging and drilling processes.

Pabitra is passionate about promoting inclusivity and helping students and early career professionals thrive both technically and emotionally in often challenging work environments.



INTERNATIONAL ASSOCIATION FOR
ENGINEERING GEOLOGY
AND THE **ENVIRONMENT**
ASSOCIATION INTERNATIONALE DE
GÉOLOGIE DE L'INGÉNIEUR
ET DE L'ENVIRONNEMENT

Martha Whitney (California/France)

Owner, Consulting Engineering Geologist,
Whitney Geologic; Director, AEG
International Region; AEG News
Acquisitions Editor; IAEG National Group
Representative for USA

Martha is an engineering geologist specializing in QA/QC and Client Representation for geotechnical site investigations to support design of linear infrastructure and offshore renewables. Martha has worked in the Pacific Northwest, Australia, Europe, East Africa, Papua New Guinea, the North Sea, and the northern Atlantic Ocean. Through these primarily male-dominated experiences, she gained an understanding of the challenges women face in our profession and is working on initiatives that encourage women to consider careers in the geosciences. She works towards a future where we encounter more women in the field and on research vessels, and ultimately more women in supervisory roles. She lives in Montpellier, France and enjoys food, wine, hiking, cycling, climbing, and music of all sorts.



INTERNATIONAL ASSOCIATION FOR
ENGINEERING GEOLOGY
AND THE **ENVIRONMENT**
ASSOCIATION INTERNATIONALE DE
GÉOLOGIE DE L'INGÉNIEUR
ET DE L'ENVIRONNEMENT



Olga S. Barykina

Associate Professor at
Lomonosov Moscow State
University

Olga is an associate professor at Lomonosov Moscow State University, working on engineering geodynamics. Her area of interest is the study of faults, landslides, assessment of stability of territory and structures to catastrophic processes

Within the walls of the University she reads courses “Engineering Geodynamics”, “Methods of engineering geological research”, etc. He teaches similar courses at the branch of Moscow State University in Dushanbe (Tajikistan)

Olga is a route tutor at the summer geological practice for students



INTERNATIONAL ASSOCIATION FOR
ENGINEERING GEOLOGY
AND THE **ENVIRONMENT**
ASSOCIATION INTERNATIONALE DE
GÉOLOGIE DE L'INGÉNIEUR
ET DE L'ENVIRONNEMENT

Dominique Ngan-Tillard (The Netherlands)

Associate Professor of Engineering Geology
DELFT UNIVERSITY OF TECHNOLOGY

Dominique lectures Engineering Geology and Rock Mechanics and researches the use of non-destructive techniques to reveal ground structures at multi-scales. Besides engineering, she applies successfully her know-how to geoarchaeology projects. Passionate about her field, she boosts the interest of the new comers by bringing the field to the classroom using Virtual Reality.

Dominique will chair the IAEG 2026 congress in Delft. The congress entitled “Engineering Geology in a Rapidly Changing World” will be an excellent opportunity to promote Equity, Diversity and Inclusivity.



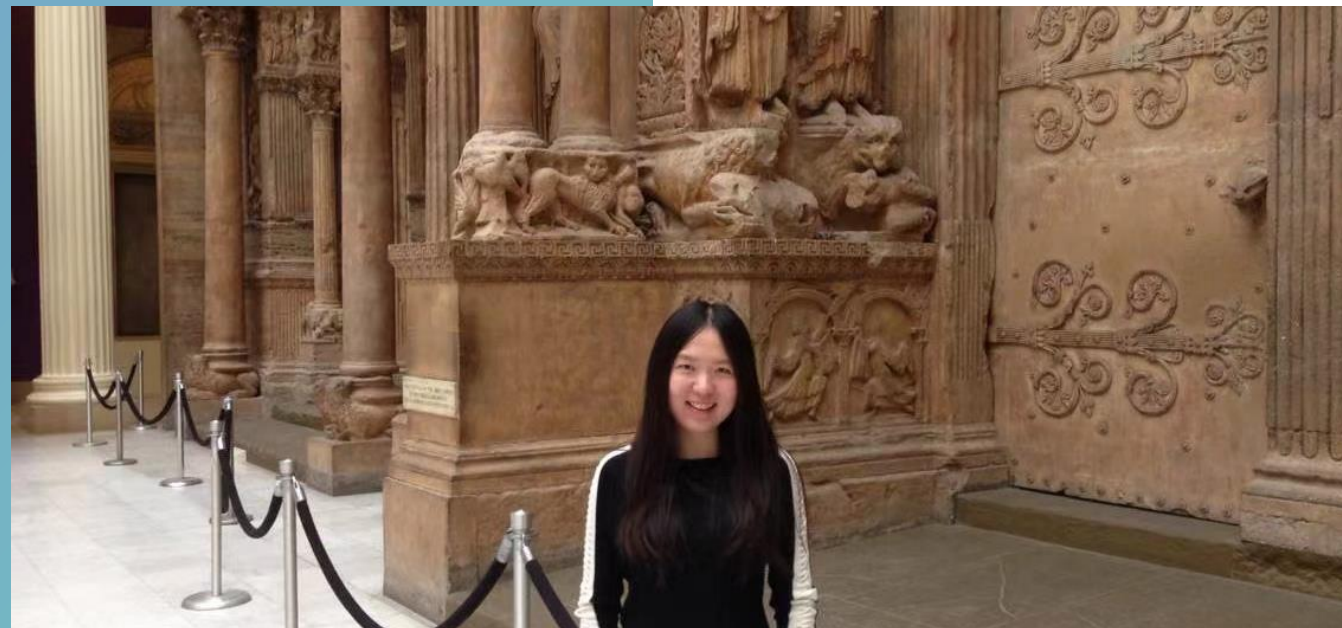
INTERNATIONAL ASSOCIATION FOR
ENGINEERING GEOLOGY
AND THE **ENVIRONMENT**
ASSOCIATION INTERNATIONALE DE
GÉOLOGIE DE L'INGÉNIEUR
ET DE L'ENVIRONNEMENT

Zan Wang (China)

**Associate Research Professor
Institute of Geology and Geophysics, CAS**

Zan is an associate research professor at the Institute of Geology and Geophysics, Chinese Academy of Sciences (IGG-CAS). She holds a Ph.D. in Civil and Environmental Engineering from Carnegie Mellon University in the United States. Before joining IGG-CAS in 2022, she worked as a post-doctoral research fellow at the National Energy Technology Laboratory in Pittsburgh, USA.

Zan is passionate about research in earth sciences. Her research interests include statistics, machine learning and uncertainty quantification. Her work has focused on the application of deep learning techniques for the automatic identification of geological structures and geohazards.



Anjila Babu Malla (Nepal)

Coordinator of WEG Nepal and a Ph.D. Scholar in Shimane University Japan. An engineering geologist by profession worked in the field of engineering geology, geotourism and hydrogeology.

As a female in the field of engineering geology, breaking gender stereotypes, contributing to diversity in fields, and working together to solve problems and make meaningful contributions to engineering geology



INTERNATIONAL ASSOCIATION FOR
**ENGINEERING GEOLOGY
AND THE ENVIRONMENT**
ASSOCIATION INTERNATIONALE DE
**GÉOLOGIE DE L'INGÉNIEUR
ET DE L'ENVIRONNEMENT**

Julia Frolova (Russia)

**Associate Professor
Faculty of Geology
Lomonosov Moscow State University**

Julia has been working at the Department of Engineering Geology for more than 30 years. Areas of scientific expertise: soil science, rock mechanics, geothermal projects. Gives lectures on rock mechanics and engineering geology for students. She is a teacher of field practice in fundamental geology.

Julia is passionate about training young specialists in engineering geology, teaching how to work in a team, how to have fun surviving and working in difficult field conditions, how to stay positive and enjoy the environment.



INTERNATIONAL ASSOCIATION FOR
**ENGINEERING GEOLOGY
AND THE ENVIRONMENT**
ASSOCIATION INTERNATIONALE DE
**GÉOLOGIE DE L'INGÉNIEUR
ET DE L'ENVIRONNEMENT**



Sweta Guragain)

Research Student, Shimane University, Japan

Dedicated MEXT scholar at Shimane University pursuing advanced studies in Geo-environment and Natural Disaster. Eager learner and an enthusiastic professional in the field of engineering geology.

Passionate about my work and take immense pride in being part of the dynamic field of engineering geology. Committed to contribute to our understanding of geological structures and their implications for natural disasters.

Aliki Kokkala (Greece)

**Engineering Geologist,
Aristotle University of Thessaloniki,
AuroraGeo Consulting**

Aliki is an engineering geologist who specializes in geohazards in mining and civil industry. Her PhD thesis introduced an advanced engineering geological database, for managing extensive geological and engineering geological data aiming to mitigate geological uncertainties and geotechnical challenges for safe urban planning.

Aliki is passionate about innovative research in engineering geology, fostering continuous learning, and advancing earth sciences education. She thrives on collaborative problem-solving, bringing together diverse perspectives and skills to tackle complex challenges.

